

ALL INFORMATION INCLUDED BELOW IS CORRECT AS AT THE TIME THAT OUR BROCHURE WENT TO PRESS BUT PLEASE BE AWARE THAT IN THE EVENT THAT A SUBSTITUTION IS MADE, THIS NUTRITIONAL AND ALLERGEN SUMMARY MAY NOT REFLECT THE TRUE CONTENTS OF THE GIFT.

IF YOU HAVE ANY CONCERNS IN RELATION TO ALLERGENS OR ANY OTHER DIETARY REQUIREMENTS, PLEASE CONTACT US PRIOR TO PURCHASE.

VH Code 1014243

Gold Crown Decorative Chocolate Slab with Hazelnuts & Cranberries



HAYW052

Chocolate Slab with Dusted Hazelnuts & Cranberries

Sugar (24%), liquid whole **egg**, margarine (vegetable oil (palm, rapeseed), water, salt, natural flavour), **wheat** flour, glucose syrup (from **wheat**) (contains preservative: **sulphur dioxide**), chocolate chips (12%) (sugar, cocoa mass, cocoa butter, emulsifier (**soya lecithin**), natural vanilla flavouring), humectant: vegetable glycerine, cocoa powder (cocoa beans, acidity regulator: potassium carbonate), **hazelnut** (6%) (**nuts**), caramel icing (sugar, glucose syrup, sweetened condensed **milk**, water, unsalted **butter** (**milk**), golden syrup, palm oil, salt, emulsifiers: rapeseed lecithin, e473, flavouring: natural), cranberries (3%) (cranberries, sugar, sunflower oil), water, edible decoration (sugar, glucose syrup, non-hydrogenated palm oil, water, acacia gum, glycerine, mono- and diglycerides of fatty acids, xanthan gum, titanium dioxide, iron oxide, shellac), preservative: potassium sorbate, dusting

NUTRITIONAL INFORMATION PER 100g Energy 1616KJ/387Kcal Fat 19.0g Saturates 6.7g Carbohydrate 49.7g Sugars 28.6g Protein 5.7g Salt 0.4g

For allergens including cereals containing gluten see ingredients in **bold** print. Store in a cool dry place. Once opened consume within 3 days.

Best Before: 28 Oct 2019
Batch: 13819

Gold Crown Bakes Ltd., Hull, HU7 6YF

VH Code 005776

Simpkins Traditional Mulled Wine Travel Sweets 200g



MULLED WINE FLAVOUR DROPS

Made by: Simpkins, Sheffield, S6 4LD, England.

INGREDIENTS: Sugar, Glucose syrup, Citric Acid, Natural Flavour, Natural Colours E163

Nutritional Information per 100g. Energy 1740kJ/403kcal, Fat 0.0g of which saturates 0.0g, Carbohydrate 98g of which Sugars 98g, Protein 0.6g, Salt 0.00g

See side of tin for batch number and best before end

5 011563 002498

Net wt 200g
002478

VH Code 1013241

Cambrook Brilliantly Baked Hickory Smoke Flavour Almonds 45g



| Nutritional Information / Nährwertangaben | |
|--|------------------|
| Typical Values / Durchschnittliche Nährwerte | |
| Energy / Energie | |
| | Per 100g |
| | 2399KJ / 574Kcal |
| Fat / Fett | 50.0g |
| of which saturates / davon gesättigte Fettsäuren | 3.8g |
| Carbohydrate / Kohlenhydrate | 9.2g |
| of which sugars / davon Zucker | 5.5g |
| Fibre / Ballaststoffe | 7.3g |
| Protein / Eiweiß | 21.2g |
| Salt / Salz | 1.9g |

GB: HICKORY SMOKE SEASONED ALMONDS:
Ingredients: 94% Almonds, 4% Hickory Smoke Seasoning (Salt, Maltodextrin, Yeast Extract, Dextrose, Smoke Flavouring, Rapeseed Oil, Acidity regulator: Citric Acid), Stabiliser: Gum Arabic
Best Before: See back of pack. Store in a cool dry place. May contain traces of sesame and various nuts including peanuts.

DE: MANDELN MIT HICKORY-RAUCHAROMA:
Zutaten: 94% Mandeln, 4% Hickory-Raucharoma (Salz, Maltodextrin, Hefeextrakt, Dextrose, Raucharoma, Rapsöl, Säureregulator: Zitronensäure), Stabilisator: Gummi Arabicum.
Mindestens haltbar bis: Siehe Packungsrückseite. Kühl und trocken lagern.
Kann Spuren von Sesam und anderen Nüssen (inklusive Erdnüssen) enthalten.

29.11.19
1324

130663

VH Code 008707

Lily O'Briens Ultimate Chocolate Collection 93g



Ingredients:

Milk Chocolate [Sugar, Whole **Milk** Powder, Cocoa Butter, Cocoa Mass, Emulsifier (**Soya** Lecithin), Natural Vanilla Flavouring], Dark Chocolate [Cocoa Mass, Sugar, Cocoa Butter, Emulsifier (**Soya** Lecithin), Natural Vanilla Flavouring], White Chocolate [Sugar, Cocoa Butter, Whole **Milk** Powder, Emulsifier (**Soya** Lecithin), Natural Vanilla Flavouring], Glucose Syrup, Caramel Filling [Milk Chocolate (Whole **Milk** Powder, Cocoa Powder, Caramelised Sugar, Cocoa Mass, Sugar, Natural Caramel Flavouring), Sugar, Vegetable Oil (Sunflower), Biscuit Pieces (**Wheat** Flour, Sugar, **Wheat** Malt Flour, **Wheat** Starch, Raising Agent (Sodium Bicarbonate), Salt, Natural Vanilla Flavouring), Skimmed **Milk** Powder, Emulsifier (**Soya** Lecithin), Spices], Sticky Toffee Caramel [Sugar, Glucose Syrup, Coconut Oil, Water, Sweetened Condensed Milk (**Milk**, Sugar), Butter (**Milk**), Cocoa Butter, Cocoa Mass, Natural Flavouring, Salt, Whey Powder (**Milk**)], Milk Chocolate Filling [Vegetable Oil (Palm), Whole **Milk** Powder, Cocoa Butter, **Milk** Fat, Emulsifier (**Soya** Lecithin), Natural Vanilla Flavouring], Lemon Filling [Glucose Syrup, Sugar, Sweetened Condensed Skimmed Milk (**Milk**, Sugar), Water, Rapeseed Oil, Stabiliser (Sorbitol), Modified Starch (Maize), Lemon Concentrate, Acidity Regulator (Citric Acid), Natural Lemon Flavouring, Emulsifier (Mono & Diglycerides of Fatty Acids) Colour (Beta Carotene)], White Chocolate Filling [Vegetable Oil (Palm), Sugar, Whole **Milk** Powder, Cocoa Butter, **Milk** Fat, Emulsifier (**Soya** Lecithin), Natural Vanilla Flavouring], Butterfat Blend [Vegetable Oil (Palm & Rapeseed), Sugar, Glucose Syrup, Water, **Milk** Fat, Emulsifier (Mono & Diglycerides of Fatty Acids, Natural Flavouring)], Sugar, **Hazelnuts**, Water, Invert Sugar Syrup, Freeze Dried Orange Pieces, Vegetable Oil (Rapeseed), White Meringue Pieces [Sugar, **Wheat** Starch, **Egg** Albumen, Vegetable Fat (Shea, Palm & **Soya** Beans)], Natural Flavouring, Emulsifier (**Soya** Lecithin).

! Allergy Advice: For Allergens, including Cereals containing Gluten, please see ingredients listed in **BOLD**



This product does not contain any artificial colours or flavours. This product is suitable for vegetarians.

93g 3.2oz e

Milk Chocolate contains Cocoa Solids 30% minimum, Milk Solids, 20% minimum. Dark Chocolate contains Cocoa Solids 55% minimum.

For maximum taste and enjoyment, please store your Lily O'Brien's chocolates in a cool dry place 15-18°C away from moisture, strong sunlight and odours.

Visit our website: www.lilyobriens.com

Best Before End: 31 MAY 20

Lily O'Brien's, Green Road, Newbridge, Co. Kildare, Ireland.

Batch No: L19137

Product of Ireland

Nutrition Information

| Nutrition Information Typical Values | Per 100g | Per serving (38g - Approx. 3 chocolates) |
|--------------------------------------|--------------------|--|
| Energy | 2202kJ/ 526kcal | 837kJ/ 200kcal |
| Fat | 31.5g | 12.0g |
| of which saturates | 18.4g | 7.0g |
| Carbohydrate | 57.8g | 22.0g |
| of which sugars | 50.0g | 19.0g |
| Protein | 5.2g | 2.0g |
| Salt | 0.15g | 0.06g |



VH Code 1011032

Buttermilk Irish Cream Fudge 100g



Ingredients: sugar, sweetened condensed milk (whole milk, sugar), salted butter (milk, salt), golden syrup, glucose syrup, Irish cream liqueur (milk)(1%), natural Irish cream flavouring, salt.

| TYPICAL VALUES | PER 100g | PER 30g SERVING |
|------------------------|----------|-----------------|
| ENERGY (kJ) | 1750 | 525 |
| (kcal) | 415 | 125 |
| FAT (g) | 11.1 | 3.3 |
| of which SATURATES (g) | 7 | 2.1 |
| CARBOHYDRATES (g) | 77.3 | 23.2 |
| of which SUGARS (g) | 76.9 | 23.1 |
| PROTEIN (g) | 1.5 | 0.5 |
| SALT (g) | 0.48 | 0.14 |

Allergy advice: for allergens please refer to ingredients in **bold**. Made in a factory that uses peanuts and nuts as an ingredient.

Storage: store in cool, dry conditions. Do not refrigerate. Once open keep tightly sealed and use within 2 weeks.

Best before: see base of pack.

This pack contains approx. **3 servings**

We'd love to hear your feedback, so please get in touch if there's anything you would like to share.

The Buttermilk Kitchen, Cooksland Ind Estate, Bodmin, PL31 2QB

Visit us at www.buttermilk.co.uk

Made in the UK by Buttermilk Confections Ltd.



VH Code 1010595

Corkers Sweet Potato, Parsnip, Carrot & Beetroot Vegetable Crisps 125g



Like a basketful of texture and taste harvested from a lovingly-tended garden, with a perfect pinch of natural seasoning. Full-on flavour the Corkers way!

Ingredients: Vegetables in variable proportions (parsnip, sweet potato, beetroot, carrot) (64%), Sunflower oil, Sea salt.

Store in a cool dry place away from bright light and strong odours.

Nutritional information

| Typical values | per 100g |
|--------------------|----------------|
| Energy | 2187kJ/527kcal |
| Fat | 37g |
| of which saturates | 3.9g |
| Carbohydrate | 36g |
| of which sugars | 29g |
| Fibre | 14g |
| Protein | 6.3g |
| Salt | 0.75g |

VH Code 1011991

nibnibs Rosemary Grissini Breadsticks 125g



BREADSTICKS MADE WITH THE FINEST WHEAT FLOUR, EXTRA VIRGIN OLIVE OIL AND SEA SALT.

Ingredients

Wheat flour from Yorkshire Mills (contains Calcium, Iron, Niacin, Thiamin), Durum **Wheat** Semolina, Extra Virgin Olive Oil (10%), Yeast, Sea Salt, Rosemary (1%), Rosemary Extract.

For allergens please see ingredients in **Bold**.
Produced in an environment that handles **milk**.

Suitable for vegetarians

Nutritional Information

typical values
per 100g

| | | |
|--------------------|------|-------|
| Energy | kJ | 1762 |
| | kcal | 417 |
| Fat | | 11g |
| of which saturates | | 1.4g |
| Mono-unsaturates | | 7.6g |
| Polyunsaturates | | 1.2g |
| Carbohydrate | | 72.6g |
| of which sugars | | 1.1g |
| Fibre | | 2.8g |
| Protein | | 11.3g |
| Salt | | 1.7g |

VH Code 1014633

Cole's Figgy Christmas Pudding 275g



INGREDIENTS: Breadcrumbs (**Wheat Flour** (**Wheat Flour**, Calcium Carbonate, Iron, Niacin, Thiamine), Water, Salt, Yeast), Brown Sugar, Vegetable Suet (Palm Oil, Sunflower Oil, **Wheat Flour** (**Wheat Flour**, Calcium Carbonate, Iron, Niacin, Thiamine)), **Wheat Flour** (**Wheat Flour**, Calcium Carbonate, Iron, Niacin, Thiamine), Diced Figs (11%) (Figs, Rice Flour), Golden Syrup, Reconstituted Skimmed Milk, Currants (7%), Rum (5%), Baking Powder (Raising Agents: (E450i, E500), **Wheat Flour** (**Wheat Flour**, Calcium Carbonate, Iron, Niacin, Thiamine)), Mixed Spice, Ground Ginger, Cinnamon.

ALLERGEN INFORMATION: For allergens, including cereals containing gluten, see ingredients in **Bold**, may also contain traces of nut.

V SUITABLE FOR VEGETARIANS

PREPARATION GUIDELINES: Remove outer packaging and pierce film.

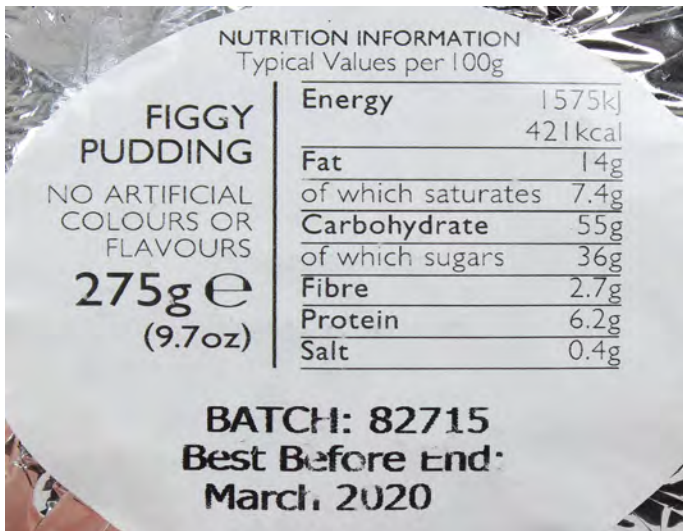
TO MICROWAVE: Cook on full power for 1 minute and 30 seconds (Time based on a 800 watt output. If different refer to manufacturer's handbook).

TO STEAM OR BOIL: Place in steamer or boil in a saucepan filled to half depth of the pudding with water. Cook for 45 minutes.

Do not boil dry.

SERVING: Once cooked invert basin onto plate and allow to stand for 30 seconds.

6 91544 00041 2



NUTRITION INFORMATION
Typical Values per 100g

FIGGY PUDDING
NO ARTIFICIAL COLOURS OR FLAVOURS
275g e
(9.7oz)

| | |
|---------------------|-------------------|
| Energy | 1575kJ 421kcal |
| Fat | 14g |
| of which saturates | 7.4g |
| Carbohydrate | 55g |
| of which sugars | 36g |
| Fibre | 2.7g |
| Protein | 6.2g |
| Salt | 0.4g |

BATCH: 82715
Best Before End:
March, 2020

VH Code 005734

The English Provender Co. Apple, Pear & Fig Chutney 310g



APPLE, PEAR & FIG CHUTNEY **310g^e**

With spiced figs that decidedly shake up this classically smooth fruit pairing.

INGREDIENTS: Sugar, Bramley Apples (23%), Pear (20%), Malt **Barley** Vinegar, Dried Figs (5%)(Dried Figs, Rice Flour), Bramley Apple Puree (5%), Onion, Dried Onion, Garlic Puree, Sea Salt, Ginger Puree, Spices. We've highlighted allergens (including gluten) in **bold**.

NUTRITION: Typical values per 100g **Energy** 770kJ/181kcal
Fat 0.4g of which **saturates** 0.1g **Carbohydrate** 44g
of which **sugars** 42g **Protein** 0.1g **Salt** 1.20g.

STORAGE INSTRUCTIONS
Unopened: keep in a cool, dry place.
Opened: keep in the fridge. Finish within 6 weeks.
Before you dive in: check the safety button on the lid is pressed down.

Veggie and vegan-friendly
Made by English Provender Company,
PO Box 5, Greenham, Berkshire,
RG19 6HA, UK.
Call us on 01635 592655.
Relish every moment at englishprovender.com

PRI07184-V5 Best Before End

FEB 2021
9059 11:38

5 012818 192148 >

VH Code 1014593

Popcorn Shed Pop 'N' Choc Popcorn 60g



Unlock the Flavour

INGREDIENTS
Popped Corn (23%), Sugar, Butter (contains **Milk**), Milk Chocolate (8%) (contains: Sugar, Cocoa Butter, Whole **Milk** powder, Cocoa Mass, Emulsifier: **Soya** Lecithin, Natural Vanilla Flavouring), Glucose Syrup, Golden Syrup, Cocoa Powder (6%), Rapeseed Oil, Sea Salt. Emulsifier: **Soya** Lecithin. Raising Agent: Bicarbonate of Soda.

For allergens please see ingredients in **bold**.

Suitable for Vegetarians.

Store in a cool, dry place. Once opened, re-seal bag to ensure freshness.

WARNING
May contain the occasional unpopped kernel. Made in a facility where **Nuts** and **Peanuts** are present. So delicious it's hard to share!

Best before see base

NUTRITIONAL INFORMATION
Typical Values per 100g


| | |
|--------------------|----------------|
| Energy | 494kcal/2067KJ |
| Fat | 23.4g |
| Of which saturates | 14.3g |
| Carbohydrates | 63.8g |
| Of which sugars | 40.0g |
| Protein | 5.2g |
| Salt | 0.8g |

Established in a shed in Great Britain.

Carve your message into a tree and send to Popcorn Shed Ltd, Shedquarters, 30 City Road, London, EC1Y 2AB

FAMILY OWNED
MADE IN BRITAIN

There's nothing CORN 'n' about recycling



VH Code 1014761

Abbey Biscuits Festive Berry Biscuits 150g

Ingredients:Wheat Flour (Calcium Carbonate, Iron, Nicotinamide, Vitamin B1), Sugar; Margarine (Vegetable Oils (Palm, Rapeseed), Water; Salt (2%), Emulsifier: Polyglycerol Esters of Fatty Acids, Colours: Curcumin, Annatto, Flavouring), Dried Coconut (Preservative: **Sulphur Dioxide**), 100% Wholegrain **Oatflakes**, Raspberry Pieces (Apple Puree (63%), Raspberry Puree (27%)), Strawberry Pieces (Apple Puree (63%), Strawberry Puree (27%)), Blueberry Pieces (Apple Puree (80%), Blueberry Puree (13%), Blackberry Juice (1%)), Fructose Glucose Syrup, Glucose Syrup, Sugar; Humectant: Glycerol, **Wheat** Fibre, Palm Fat, Acidity Regulator: Malic & Citric Acid, Gelling Agent Pectin, Colouring (Concentrate of Carrot, Black Currant, Pumpkin & Blueberry), Sodium Bicarbonate, Salt, Partially Inverted Refiners Syrup, Water. Not suitable for **Nut** allergy sufferers due to manufacturing methods. May also contain traces of **Egg, Milk, Mustard, Oat, Sesame** and **Soya**. Suitable for Vegetarians.
For Allergen Information please see in **BOLD**.

Nutritional Information

| Typical Values | Per 100g | per Biscuit 16.67g* |
|----------------------|----------|---------------------|
| Energy | KJ | 2040 |
| | KCAL | 488 |
| FAT | | 23.6g |
| (of which saturates) | | 11.48g |
| Carbohydrate | | 62.68g |
| (of which sugars) | | 32.6g |
| Protein | | 4.6g |
| Sodium | | 0.413g |
| Salt Equivalent | | 1.03g |
| Fibre | | 3.4g |

*weight per biscuit is approx 16.67g

Store in a cool, dry place. Once opened store in an air tight container & consume within 30 days.
Produced in the UK by Abbey Biscuits

150g e

Best before: See Base

VH Code 1014717

CHOC + 100% Chocolate Drinking Chocolate 140g

